



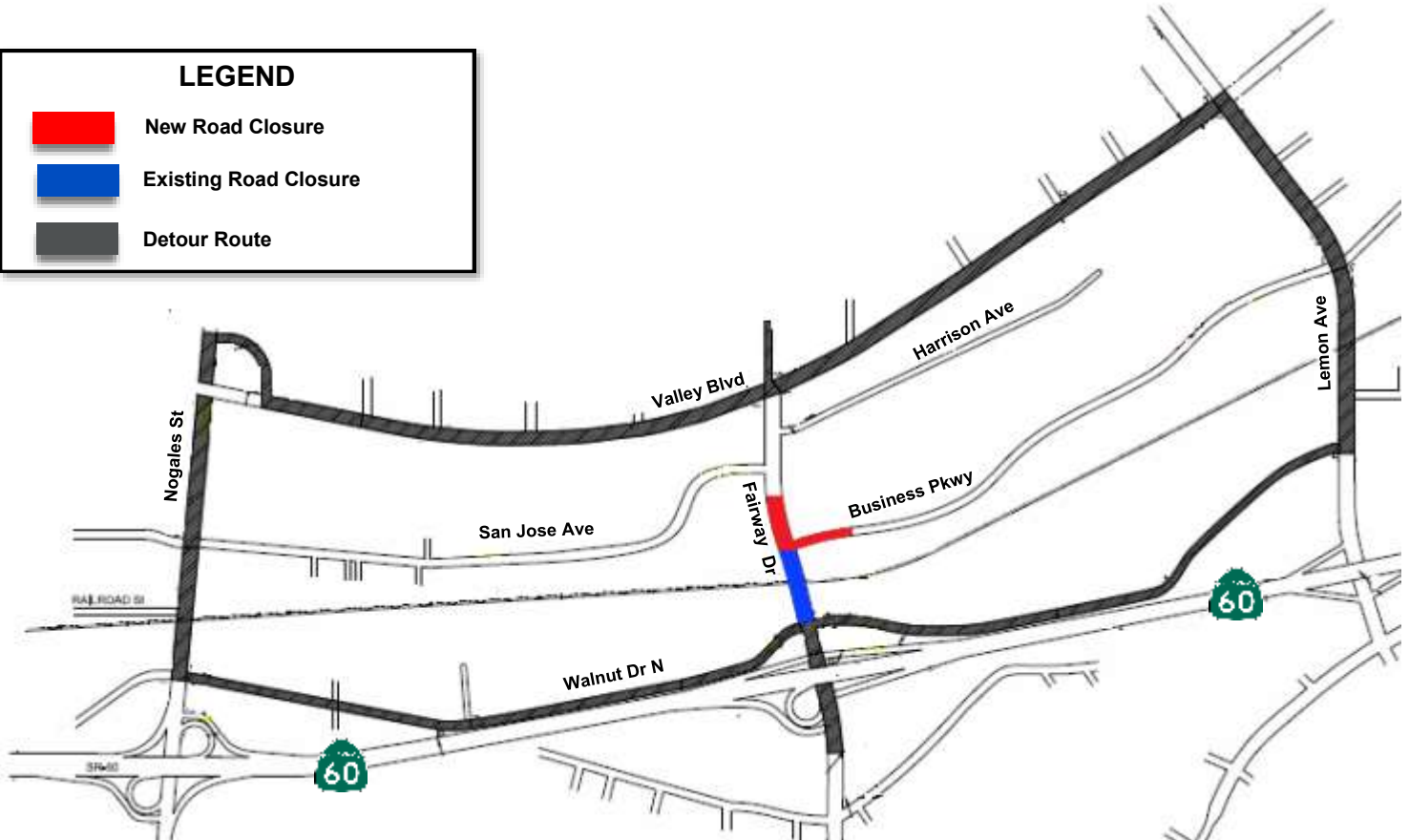
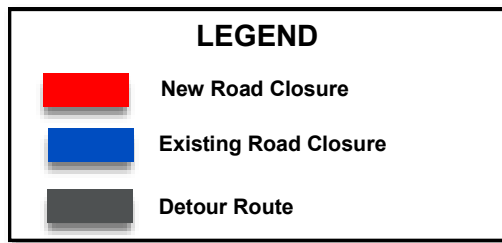
Alameda Corridor-East Project

@FairwayGS

4900 Rivergrade Road, Ste. 120 Irwindale, CA 91706 (626) 962-9292 fax (626) 472-0094 www.theaceproject.org

****CONSTRUCTION ALERT****

FAIRWAY DRIVE AND BUSINESS PARKWAY INTERSECTION TO CLOSE FOR 12 MONTHS BEGINNING DECEMBER 19; BUSINESS ACCESS WILL BE MAINTAINED



WHAT

Alameda Corridor-East Construction Project (ACE) contractors will close the intersection of Fairway Drive and Business Parkway to allow for utility work and to lower the roadway as part of the Fairway Drive Grade Separation Project.

WHAT TO EXPECT

The intersection of Fairway Drive and Business Parkway will be closed to vehicular traffic. Lemon Avenue and Nogales Street are recommended detours for north-south travel and State Route 60 access. **Access to local businesses on Fairway Drive and Business Parkway will be maintained.** Motorists and pedestrians are urged to obey posted signs and exercise caution while in the vicinity of construction area.

WHEN

The intersection will be closed starting at 12 a.m. on Thursday, December 19, 2019 and is expected to continue for the next 12 months. Most work will occur weekdays between 7 a.m. and 3 p.m.

Para información o preguntas, por favor llame al teléfono directo o visite el sitio web en:

如有疑問或需要索取工程最新資料，請致電輔助熱線或參閱工程網頁

**For the most up-to-date information or questions, please call or visit:
(888) ACE-1426 or www.theaceproject.org**

*Thank you for your patience and cooperation...**At ACE, it's Safety First!***

*Note: Construction is a dynamic process and information is subject to change without notice.
Work activity is subject to weather conditions.*

Rev 12/11/19