



## Alameda Corridor-East Project

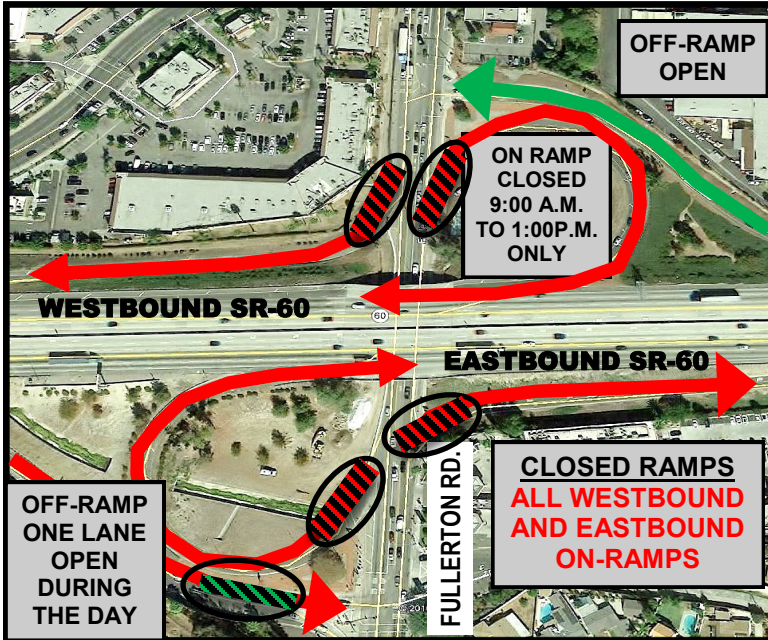
@FullertonGS

4900 Rivergrade Road, Ste. 120 Irwindale, CA 91706 (626) 962-9292 fax (626) 472-0094 [www.theaceproject.org](http://www.theaceproject.org)

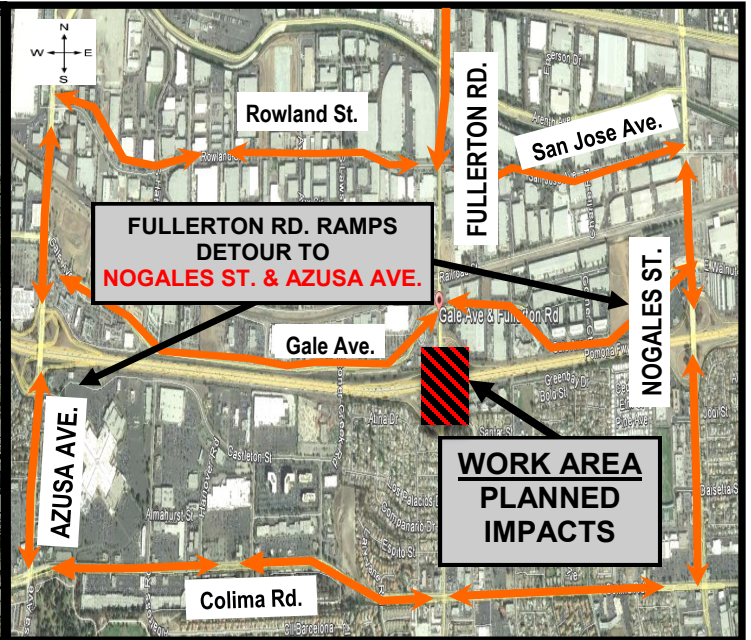
### CONSTRUCTION ALERT

## DAYTIME AND NIGHTTIME CLOSURES OF STATE ROUTE 60 FULLERTON ROAD ON- AND OFF-RAMPS CONTINUE OCTOBER 7-11

### RAMP CLOSURES



### DETOUR ROUTES



### WHAT

The Alameda Corridor-East Project (ACE) contractor will temporarily and intermittently close State Route 60 westbound and eastbound on-ramps at Fullerton Road. The eastbound off-ramp will have one lane access and will be closed at night from 10:00 p.m. to 5:00 a.m. The westbound off-ramp will remain open. The closures are necessary to complete the closeout work and are part of the improvements related to the road widening work on Fullerton Road.

### WHAT TO EXPECT

Ramps and traffic lanes will be temporarily and/or intermittently closed on portions of southbound and northbound Fullerton Road at the State Route 60 Freeway. Motorists are encouraged to use Azusa Avenue and Nogales Street as detours to access State Route 60. At least two traffic lanes on Fullerton Road will remain open in each direction at all times. A portion of the adjacent sidewalks will also be intermittently closed with pedestrian detours provided during construction. Access to local businesses will be maintained.

### WHEN

#### Daytime Closures

**Monday, October 7, 2019 to Friday, October 11, 2019 between 9:00 a.m. to 3:00 p.m.**

#### Nighttime Closures

**Monday, October 7, 2019 to Friday, October 11, 2019 between 7:00 p.m. to 6:00 a.m.**

*Para información o preguntas, por favor llame al teléfono directo o visite el sitio web en:*

*如有疑問或需要索取工程最新資料，請致電輔助熱線或參閱工程網頁*

**For the most up-to-date information or questions, please call or visit:**

**(888) ACE-1426 or [www.theaceproject.org](http://www.theaceproject.org)**

**Thank you for your patience and cooperation...At ACE, it's Safety First!**

*Note: Construction is a dynamic process and information is subject to change without notice.  
Work activity is subject to weather conditions.*

Rev 10/2/19