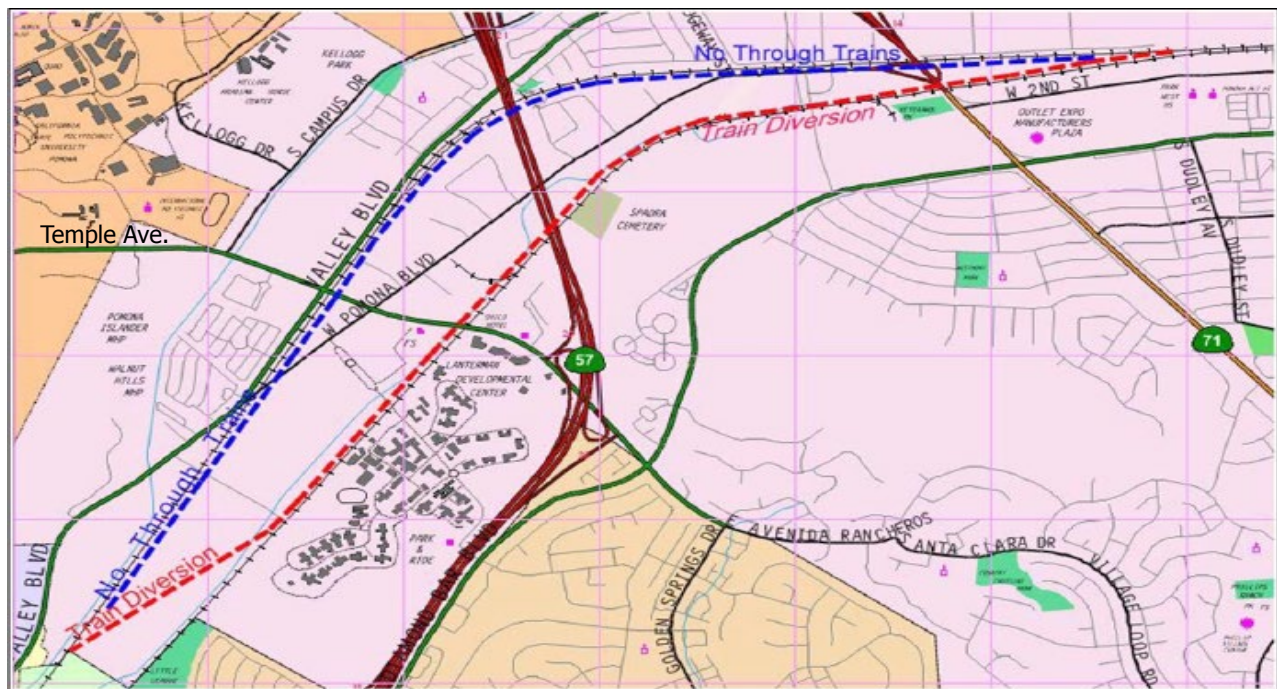




Fact Sheet

Temple Avenue Train Diversion Fact Sheet

City of Pomona



Project Description

To eliminate train traffic from a section of railroad right-of-way in the City of Pomona which includes at-grade crossings at Temple Avenue and Pomona Boulevard, a train diversion route has been constructed across farmland to connect to an existing parallel Union Pacific (UPRR) railway that is already grade separated. There were 2 collisions over the past 10 years at the two crossings. The train diversion project included the construction of railroad bridges across San Jose Creek and a vehicle underpass for Cal Poly Pomona's Spadra Farm as well as a third track where the two routes converged. A new fourth mainline right-of-way was constructed for approximately 2.3 miles.

Project Status

The total cost of the Temple Avenue train diversion project is \$94.8 million. Federal revenues provided 52% of the project budget; state, 1%; local, 40%; and Union Pacific Railroad provided 7%. Major work commenced in Fall 2008, was completed in Spring 2010 and ancillary UPRR work was completed in 2018.

Project Information

For more project information, please call the Project Helpline at (888) ACE-1426 or visit the project website at www.theaceproject.org.